

Good Night Waltz

Traditional
Kenneth Rainey, transc

Swing! ♩ = ♩³ ♩

A C

5 C G7

9 G7 C

13 G7 C

17 C

21 C F

25 F C

29 G7 C C7

Detailed description: The score is written on a single treble clef staff in 3/4 time. It begins with a boxed 'A' and a 'C' chord. The melody consists of a series of eighth and quarter notes, with some triplet markings. Chords are indicated above the staff at various points: C, G7, and F. The piece concludes with a double bar line and a key signature change to one flat (Bb).

Good Night Waltz

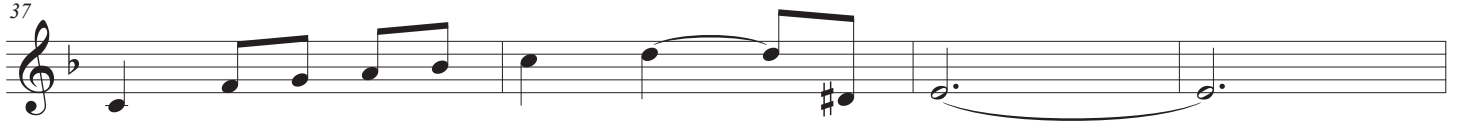
B

F

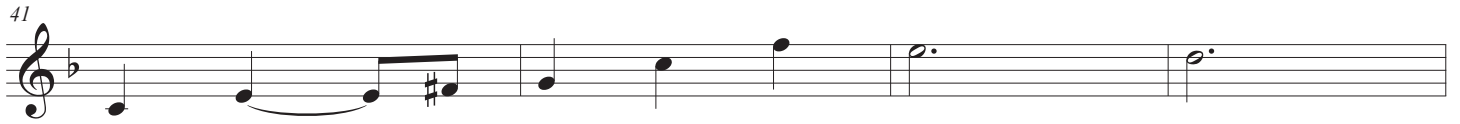


F

C7



C7



C7

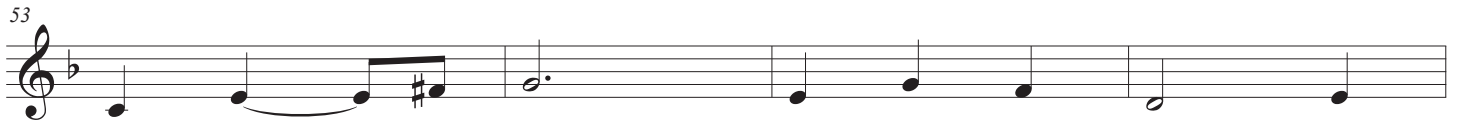
F



F



F

B \flat B \flat

F

3



C7

F

